



KALBARRI DISTRICT HIGH SCHOOL

Our school is here to...
*provide a supportive environment for
students to develop relevant skills,
knowledge, attitudes and values
that maximise individual potential
in a global society.*

Hackney Street
(PO Box 584)
KALBARRI WA 6536
☎ (08) 9937 0300
☎ (08) 9937 1389
✉ Kalbarri.DHS@education.wa.edu.au
🌐 www.kalbarridhs.wa.edu.au

Number 6

COMING EVENTS

9 MARCH 2017

MARCH

Tuesday 14 OLN A Testing—Reading
Thursday 16 ASPIRE UWA Visit
Tuesday 21 OLN A Testing - Maths
Friday 24 Whole School Assembly
Thursday 30 CLONTAF Visit
Friday 31 NCVISSA Swim Carnival

APRIL

Friday 7 Anzac Assembly
Friday 7 Last Day of Term 1
Monday 24 Staff Development Day
Students Do Not Attend
Wednesday 26 First Day of Term 2

PRINCIPAL REPORT



RESPECT ~ RESPONSIBILITY ~ CARING

Thank you this week to Mr Boreland and Ms Keding for the organisation of a fabulous swimming carnival yesterday. It was great to see parents there and all the students showing respect whilst competing for themselves and their team. Thank you to those students who showed a caring attitude to new students, to ones who needed assistance to swim their race and be part of the day and to themselves for getting in there and having a go.

This is always a big day for students and staff, who go over and above their call of duty. Thank you.

The P&C held their AGM on Friday. Whilst there were enough people there for a quorum, and some positions were filled, the positions of President and Secretary remain to be filled. Please consider coming along to meetings and offering to fill one of these positions. P&C membership is a mere \$1. Anyone can join. Meetings are no more frequent than monthly and usually last about 1 hour. By coming along to meetings, you gain an insight into what makes the school tick, and more importantly you can have some input into some important aspects of the school.

For instance, at the meeting last week, The P&C agreed to fund the cost of one air conditioning unit in the Junior Primary wing. Thank you so much for that. The units have been installed and the donation from P&C means the school is able to fund other activities. By being a member of the P&C you too can have some input into how the association helps the school to help your kids.

The WA State Elections will be held at the school on Saturday. Don't forget to come and vote. There will be a small display of student work, not as big as other times as we are only 5 weeks into term. P&C will be having a stall. Seems like the school is the place to be on Saturday.

Carol Goodwin
Principal

KALBARRI DHS BREEZEWAY EXPO



KALBARRI DHS BREEZEWAY EXPO 2017

Please come and enjoy the amazing classroom work by Kalbarri District High School students exhibited in the High School Breezeway

SATURDAY 11TH MARCH

P&C ELECTION DAY



CAKE STALL



9.00AM

SATURDAY 11 MARCH AT K.D.H.S

The P & C are requesting lots of donations of Cakes, Biscuits, Slices to sell on Saturday. Please drop off all baked goods for a 9am start.

If anyone can help with manning the stall please contact Hayley Ralph on 0407503037.

STUDENTS OF THE WEEK

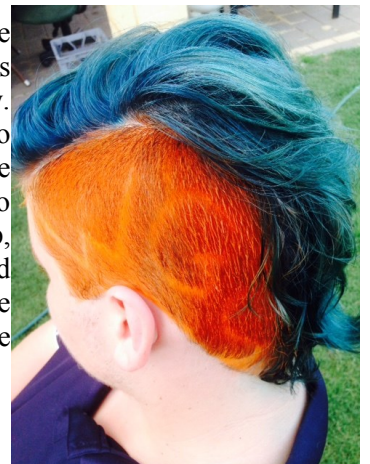
- | | |
|-----------------|-------------------------------------------------------------------------------------------------------------|
| Corey
Year 5 | For trying hard to improve in all areas. |
| Emily
Year 4 | Showing respect by listening attentively and following instructions. |
| Tom
Year 6 | An outstanding effort producing 11 personal bests and outstanding performances in classwork. Well done Tom. |

MATHLETICS

Mathletics is still producing great efforts from the students. This week 7 students put in the extra work to earn a certificate. Well done to Abby G, Sol J, Dylan McK, Jazmin N, Emma C, Ricki E, and Palin R (champion with 2400 pts).

WORLD'S GREATEST SHAVE

Some of our students are involved in the World's Greatest Shave next Friday. From colour this week to shave next week. Please support these students who are showing citizenship, respect, responsibility and caring for others, and donate to their worthy cause, The Leukaemia Foundation.



CONTRIBUTIONS & CHARGES

Contributions and charges payments can be made at the school office during office hours 8am - 4pm Monday to Thursday or 8am - 3pm on Fridays. The school office only accepts cash or cheques. Alternatively you can pay by direct deposit into the school bank account using your child's name as the reference.

Kalbarri District High School
BSB: 016650
Account: 340900021